

# The REAP Doughnut

**What's happening to make Roundhay a safe and thriving palce for people and planet?**

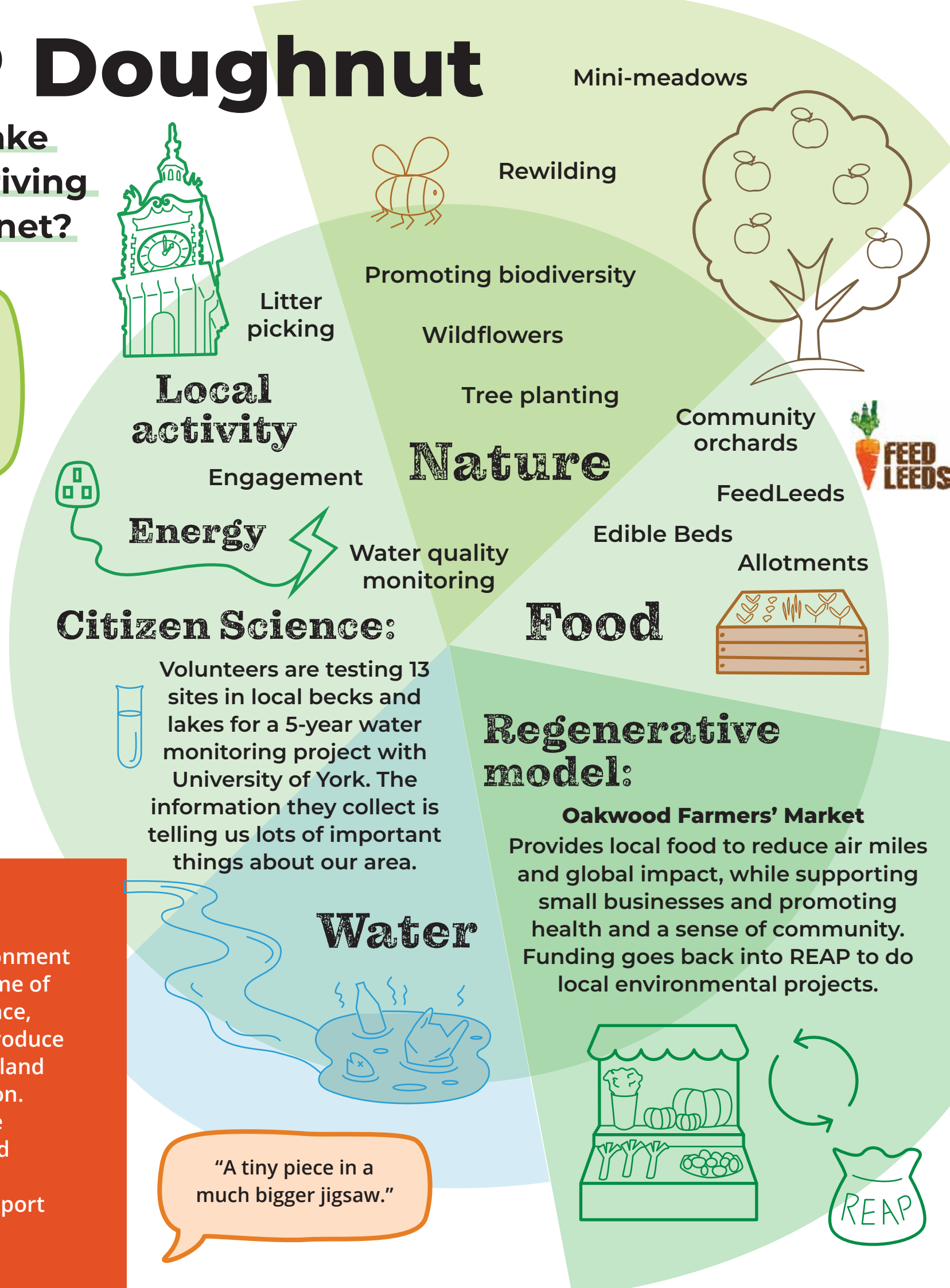
"A previously neglected and ignored patch of grass looks so much better now. People have begun walking through the trees, whereas before they would stick to the tarmac."

"REAP increases my awareness of the choices I can make"

"The energy transition needs to happen globally, micro actions lead to macro change"

## ...and the wider world?

How we live here also affects the environment and other people around the world. Some of REAP's activities address this. For instance, buying and growing sustainable local produce reduces carbon footprints and harmful land use, pollution and workforce exploitation. Growing trees and bushes regulates the temperature and sequesters carbon and pollutants. Public campaigns can raise awareness and help connect to and support global causes.



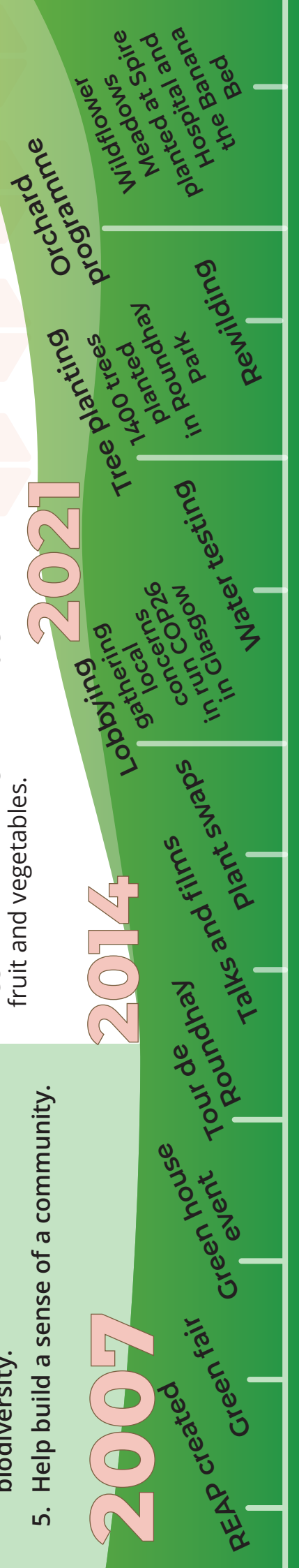
## What's next

REAP is open to your ideas and suggestions about what more we can do. Get in touch to let us know what you think.

Here are some ideas...

- Advice and action on energy efficiency.
- Connect with other local groups, especially youth and schools, to help more people get involved.
- Promote the co-benefits of projects, for example: energy efficiency and local food can be budget-friendly too; planting and growing together are good for health and wellbeing.
- Plan more events with other local groups to build community and a sense of energy and shared values.
- Explore local schemes for businesses e.g. 'Plastic Free'.
- Engage with local politicians and do more campaigns.
- Develop a map of green spaces and connect them.





"It's a fun way to make a difference to the local environment and a good way to make friends"

"If you care about the wellbeing of your family and community now and in the future, join REAP and start with local action for global change"

"A local environmental action group which makes things happen"

# What is Doughnut Economics?

Kate Raworth's book gives us a way of connecting environmental and social concerns while taking both a local and global perspective.



A safe and thriving space for all lies within the limits of planetary boundaries (set by earth systems scientists) and when no-one falls short of the social foundations (based on the UN Development Goals). No country in the world is currently in that space. In 2022 the Leeds Doughnut City Portrait showed that Leeds misses the mark on many key indicators.



# What do you think?

Share your ideas with us >



**3rd Saturday of every month 9am - 12.30pm at Oakwood Clock**

A true farmer's market.

Providing quality, fresh local produce, some of which is organic.

Regular stalls include bread, meats, fish, eggs and a wide range of locally grown fruit and vegetables.

## What should happen next? What's important to you? What does Roundhay need?

Find out more about the Roundhay Environmental Action Project and Oakwood Farmers Market. Get in touch.

Visit: <https://reap-leeds.org.uk>  
Email: [info@reap-leeds.org.uk](mailto:info@reap-leeds.org.uk)

- [@RoundhayEnvironmentalActionProjectreap](https://www.facebook.com/RoundhayEnvironmentalActionProjectreap)
- [@reapleeds](https://www.instagram.com/reapleeds)
- [@oakwoodfarmersmarket](https://www.instagram.com/oakwoodfarmersmarket)
- [Oakwood Farmers Market](https://www.facebook.com/OakwoodFarmersMarket)



Roundhay Environmental Action Project  
Registered in England No. 6415058.  
Registered Charity No. 1132380.

REAP is a local action group working to engage our local community in climate change and actions to tackle it.

Our aims are to:

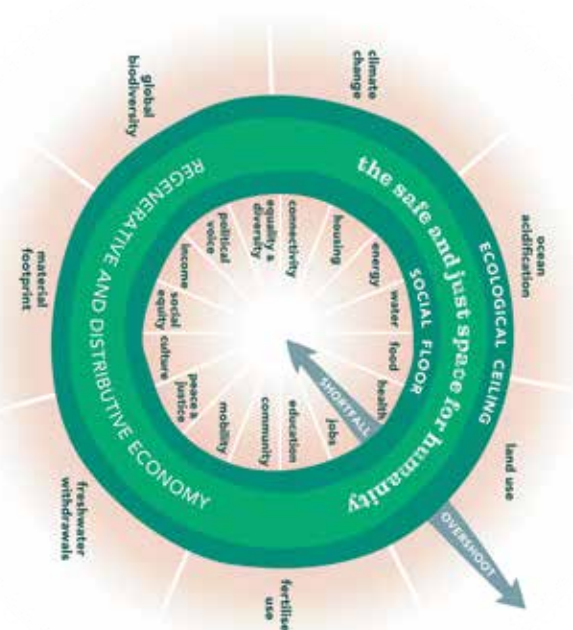
1. Increase local awareness and understanding of the actions necessary to combat the Climate Emergency.
2. Reduce local carbon emissions .
3. Help people move towards using renewable resources and creating less waste.
4. Protect our local natural environment and increase biodiversity.
5. Help build a sense of a community.

# Roundhay Environmental Action Project: our story so far...



# The Roundhay Doughnut

what is the environmental and social impact of our neighbourhood?



A joint REAP and Climate Action Leeds project